

# Cygnus

The Handheld SLAM Scanner





### Speedy and Accurate

With a scanning range of up to 120m, 320,000 points per second, a large 360°x 285° field of view, and powerful low-reflectivity range extension, the Cygnus handheld SLAM scanner can scan simple or complex environments accurately and completely in less time.



### Hybrid Solving Technique for Rapid Data Processing

The unique HSL decoding algorithm facilitates the SLAM in simplifying data collection and processing, in which the data can be exported for direct use, improving working efficiency greatly.



### Powerful Mobile Software

The SLAM Manager APP is compatible with mobile devices, enabling real-time point cloud viewing and providing a range of powerful interactive features.



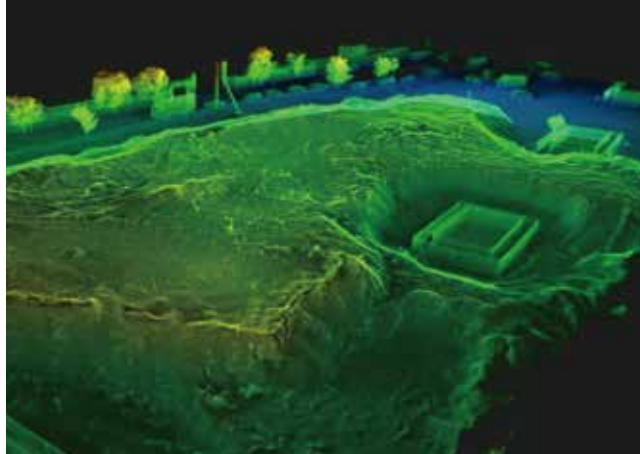
### Light-weight, Durable and Versatile

The durable design and rugged structure make the scanner a perfect tool to work effectively in any harsh environment from -30°C to 60°C. Its compact size and lightweight also make it flexible to use as hand-held or pair with backpack, drone and vehicle, meeting the requirements of various operational scenarios.



<b>Range</b>	120 m	<b>Carrier</b>	Handheld / Backpack / UAV
<b>Laser Class</b>	Class 1, Eye Safe	<b>Scanner Weight</b>	1.5 kg, 227×98×98 mm
<b>FOV</b>	360 × 285°	<b>Data Logger Weight</b>	0.8 kg, 158×70×145 mm
<b>Accuracy</b>	0.5-2 cm	<b>Channels</b>	16
<b>Points/s</b>	320,000	<b>Battery Life</b>	4 hrs
<b>Processing</b>	Real-time processing	<b>Ingress Protection</b>	IP65
<b>Display</b>	Real-time preview using mobile terminal	<b>Internal Storage</b>	512 GB Extendable to 1TB by TF card

# Applications

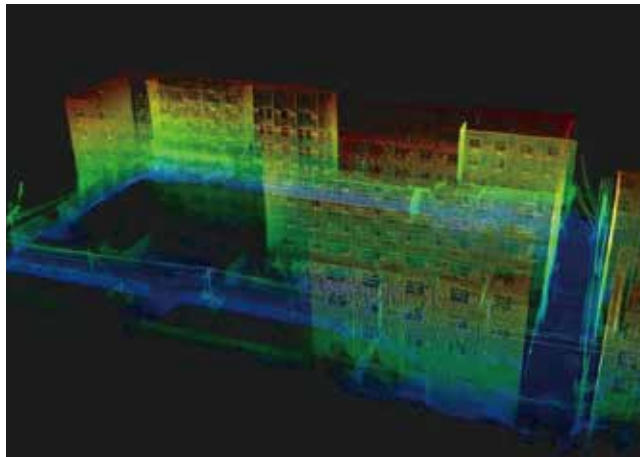
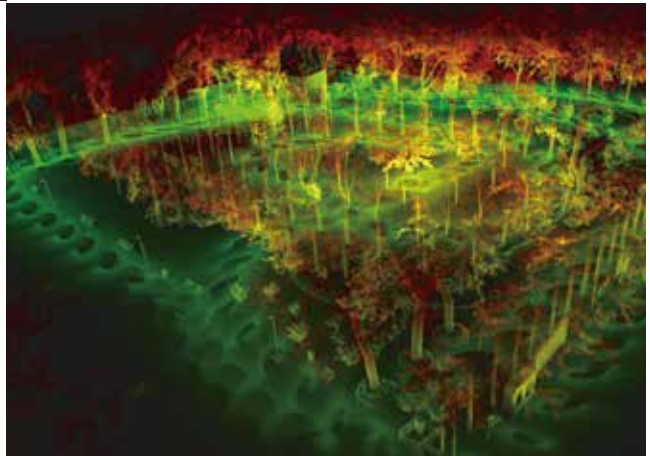


## Stockpile Volumes Measurement

Cygnus is ideal for inventorying coal piles, mine piles, materials and grain silos. Based on its laser scanning and SLAM positioning technology, it can be used for fast mobile scanning operations in sheds and outdoor environments. And its unique ultra-low reflectivity range extender function is particularly effective for coal piles and ore materials volume measurement, offering unparalleled advantages over other measurement methods.

## Natural Resources & Environment Investigation

The complex environments and high-density coverage of agriculture, forestry and geology make 3D data acquisition a problem. But Cygnus, with its large field of view, can acquire a large degree of horizontal and vertical surface information of the tree canopy, making agricultural growth, forestry and geological measurements simple and flexible.

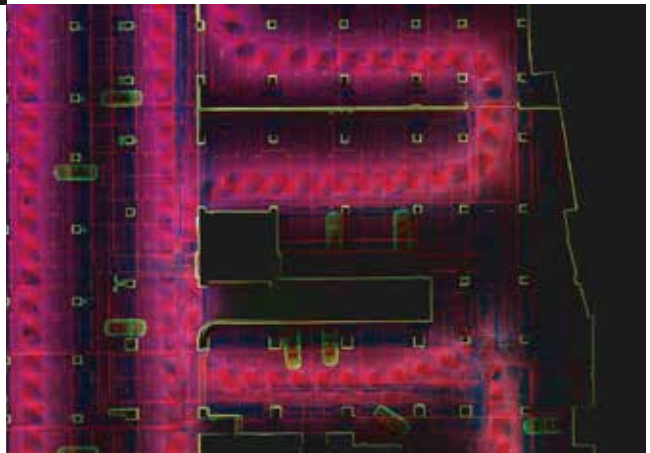


## Building Information Collection





Pair with a variety of mounting options perfectly. Capturing high-density spatial information from all kinds of building information collecting activities quickly, such as cadastral surveys and building facade collection.

## Underground Space Digitalization

The SLAM positioning technology realizes a fast, complete and accurate spatial point cloud data collection for both indoors and outdoors, such as underground parks, metro stations, shopping malls, airports, factories, and mines.



Package Components	Model/Type	Nos.
Mainframe	Cygnus	1
Data-logger	Supports 2 batteries and hot-swap	1
Handle	12 cm	1
Shoulder strap	80-160 cm	1
Main cable	111 cm	1
Memory Card	128 GB	1
Battery	14.4v, 6800mAh	2
Battery Charger	14-16.8 V	1
Host Machine Charger	19 V	1
Memory Card Storage Box	Supports 8 x SD cards & 16 TF cards	1
USB Flash Disk	64 GB	1
Mobile Phone Support	Max 9.3 cm	1
LED Flashlight	Max 800 lm	1
Charge Cable for LED Light	30.5 cm	1
Safe Transporting Box	40 * 30 * 15 cm	1

Optional Accessories	Picture	Features
<b>UAV Platform Adaptor</b>		Perfectly support the UAV platform for more efficiency data collection
<b>RTK Backpack</b>		Backpack with GNSS RTK system to precise point cloud acquisition
<b>Vehicular Bracket</b>		Convenient combination for any vehicle on any land.
<b>Panoramic Camera</b>		20MP light-weight panoramic camera with HDR for colorize the point cloud world



**Headquarters:**  
 GEOSOLUTION I GÖTEBORG AB  
 Jarnbrootts Prastvag 2  
 SE-42147 - Vastra Frolunda  
 Gothenburg, Sweden  
 info@satlab.com.se

**Regional Offices:**  
 Warsaw, Poland  
 Jičín, Czech Republic  
 Ankara, Turkey  
 Scottsdale, USA  
 Singapore  
 Hong Kong, China  
 Dubai, UAE

[www.satlab.com.se](http://www.satlab.com.se)

